

# Grain Elevator with 7.5 Acres of Excess Land

1400 E 25<sup>th</sup> Street N  
Wichita, Kansas



**GRUBB & ELLIS**  
Martens Commercial Group, LLC



- Grain Elevator with Approximately 7.5 Acres of Excess Land to the South
- 10.98 Acre Total Site Area
- Excellent Rail Access
- Visibility to I-135
- Zoned – General Industrial
- Sale Price – Please Inquire

To learn more, please contact:

Kris Wessel  
316.262.0000  
kris.wessel@grubb-ellis.com

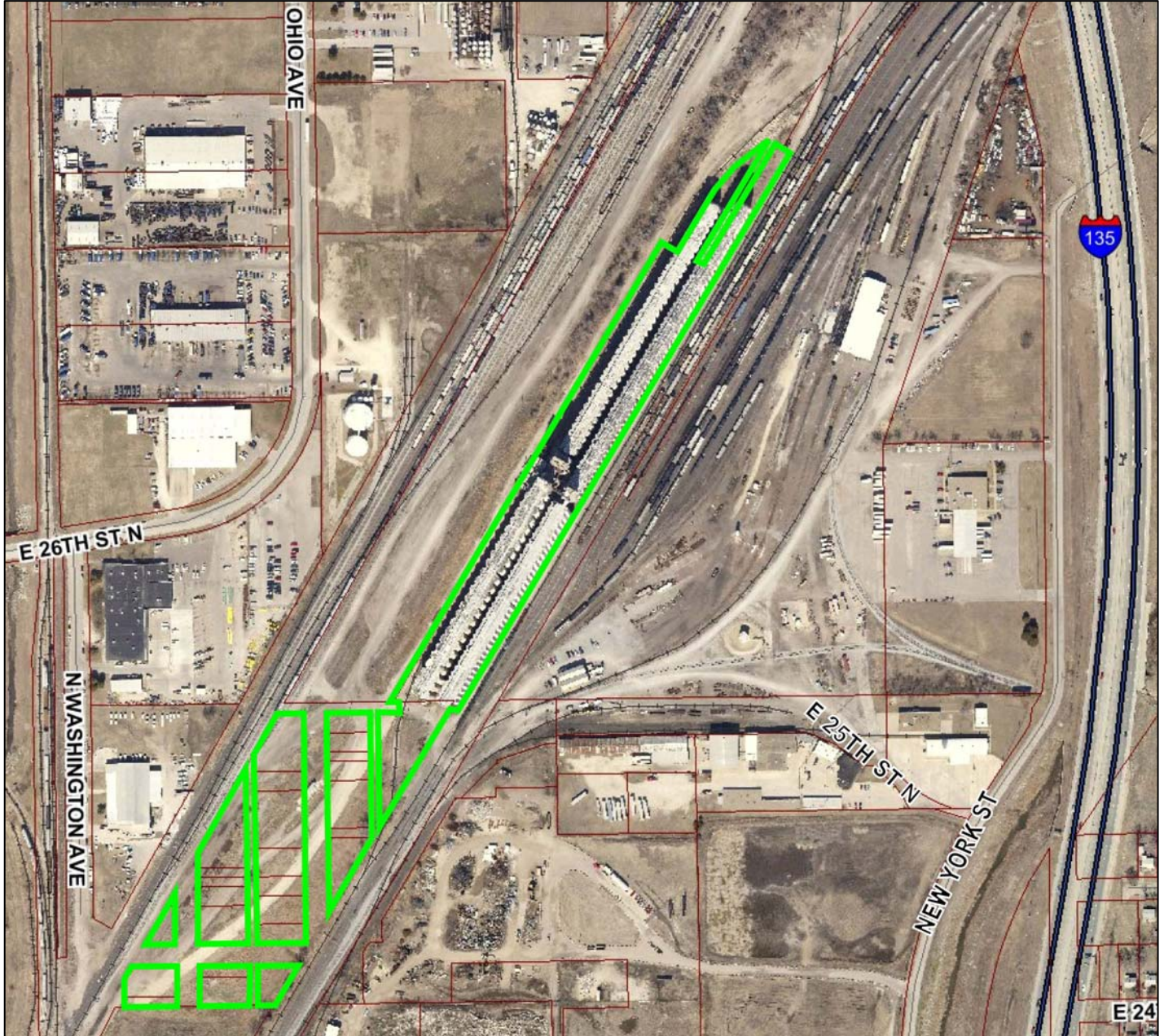


The grain elevator is not operational. At time of sale, the Seller will be placing a deed restriction on the property so that it may not be used as a grain elevator in the future.

1400 E 25<sup>th</sup> St N  
Wichita, Kansas



**GRUBB & ELLIS**  
Martens Commercial Group, LLC



Grubb & Ellis|Martens Commercial Group 435 South Broadway, Wichita, Kansas 67202 316.262.0000 316.262.0235 fax www.buildingkansas.com  
*Independently Owned and Operated*  
The information contained herein was obtained from sources believed reliable; however, Grubb & Ellis Company makes no guarantees, warranties or representations as to the completeness or accuracy thereof. The presentation of this property is submitted subject to errors, omissions, change of price or conditions prior to sale or lease, or withdrawal without notice.